

bewys
research

Contact details : contact@be-ys-research.com



researchLAB

A technological ecosystem built for innovation



OUR TWO PILLARS OF DIFFERENTIATION

PARTNERSHIP



- **Open innovation** and **co-creation** at the **heart** of our system,
- A search for **excellence**, internationally recognized,
- An **acceleration** base **facilitating industrialization**
- **Deeptechs technologies** at the state of the art
 - Big data, blockchain, deep learning
 - A single secure infrastructure in Europe
- An **intrapreneurial** approach with **large schools**
- A **short-cycle POC/MVP** innovation process

+20
international
projects

+€60 million in
research grants,
+100 partners

15 international
awards (including
ITU Telecom World
SME Award 2016
and ICT 2013)

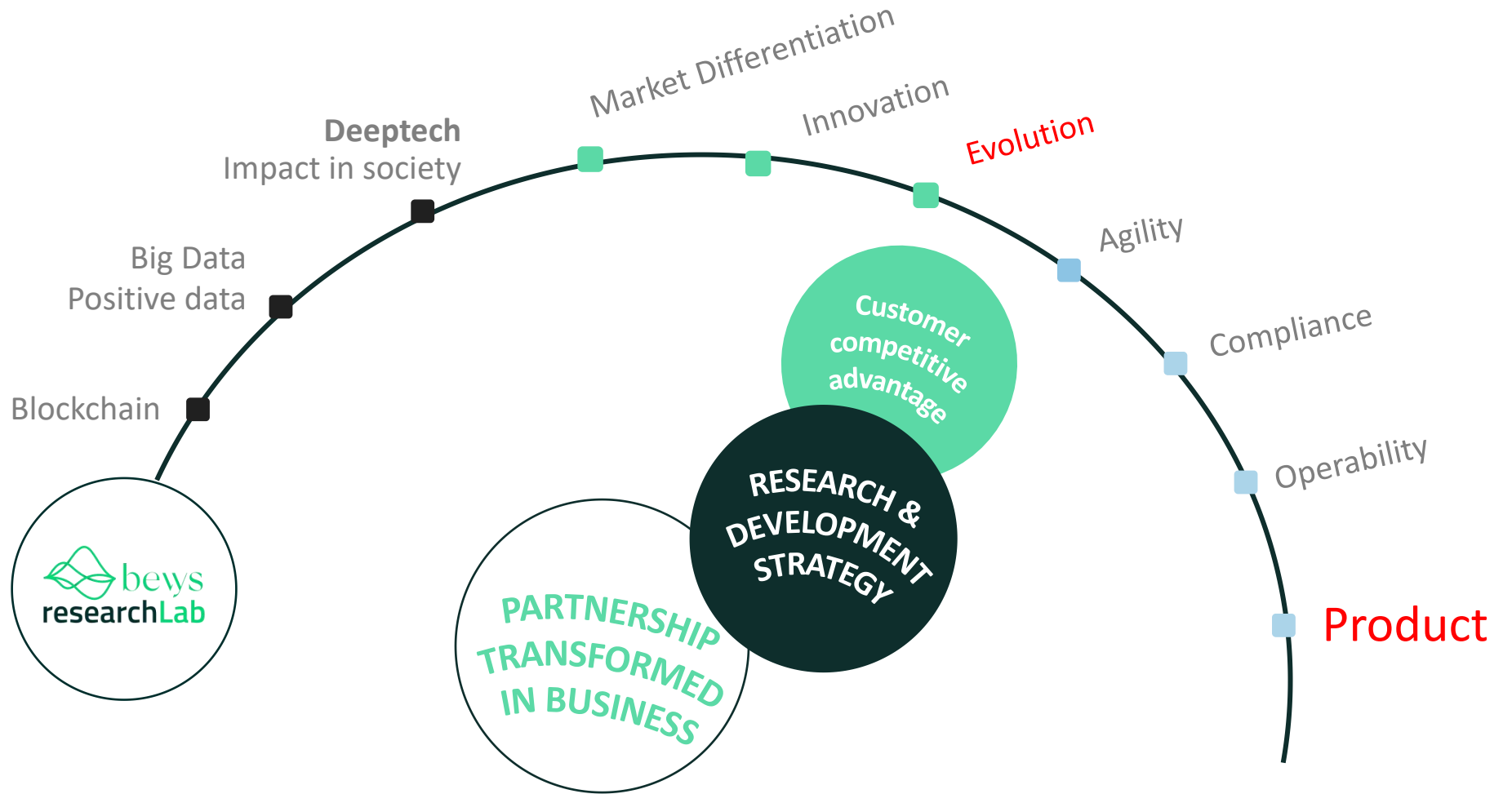




WHAT WE BELIEVE

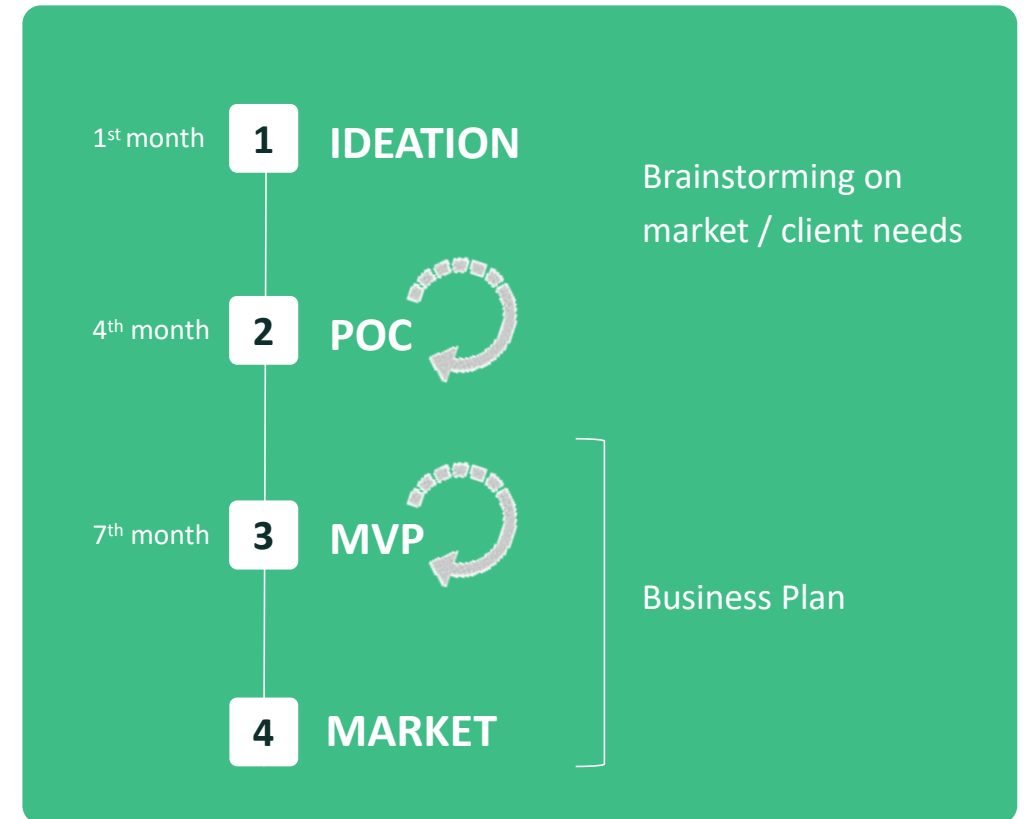
**WHEN
RESEARCH
BECOMES A
COMPETITIVE
ADVANTAGE**

SHARING OUR RESEARCH CAPACITY



CLIENT PIONNIER POC/MVP

- **Procedure**
 - Provision of a fully **equipped high-tech environment**
 - Anonymizer + RedLab + ProRegister
- **Data scientists, AI experts and researchers support**
- Contact with **leading schools** (42, ENS, ENST, EPFL etc) and **research centres** (CERN, INSERM, CNRS etc.)
- Short cycles with possible industrialization
 - **1M** - Scoping 1 month
 - **4M** - Framing + Prototyping 1 to 3 months
 - **7M** - Scoping + Proto. + PMV 1 to 3 months
- **SaaS Commissioning**
 - Invoicing packs (depending on POC/MVP)
 - Implementation complexity + team
 - Project mode **1/4/7 Month**
- Hosted in **secure cloud, HDS**
- Entry Ticket
 - **CIR eligible** (30% cash back)
 - **Multi-partner POC opportunity**





PROJECTS

SUCCESS
STORIES FROM
OUR LAB

Use case - PileICI

NEED

Enable rural residents to regain a level of service equivalent to that proposed in urban areas (foster local, sedentary and itinerant traders, and short circuits)

SOLUTION

The mobile application «PileICI». PileICI brings together in one application all the digital tools to generate traffic, generate additional sales, present and promote a product or service, organize deliveries or a click & collect...

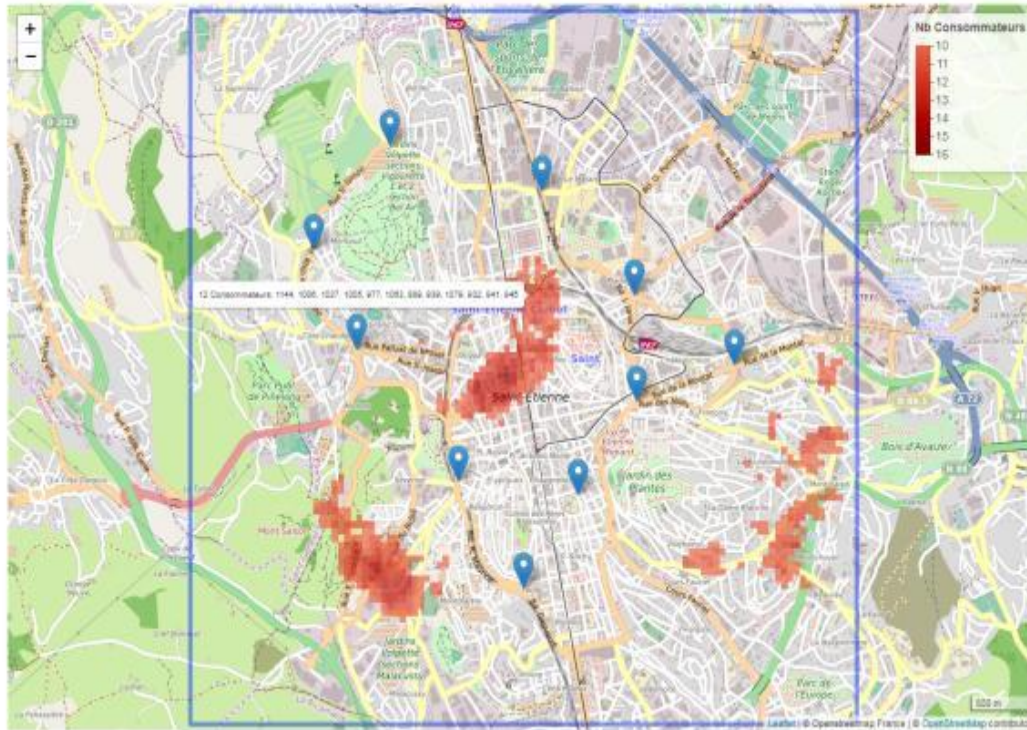
OUR LAB CONTRIBUTION

Thanks to the ResearchLab , we were able to :

- Analyse and model the customer problem.
- Develop the Data Science and AI part.
- POC and customer demo available in less than 2 months



POC voyageur de commerce



Picture from the «Proof Of Concept»

Country : France

Sector : Retailing

Actors : sedentary and itinerant traders, rural consumers, territorial authorities

Complexity of the project : ★★★★★

Time of development : X months

Partners : Village By CA, BPI, CCI Innovation, Digital League Auvergne Rhône Alpes...

Use case - Mountain Data Drone

NEED

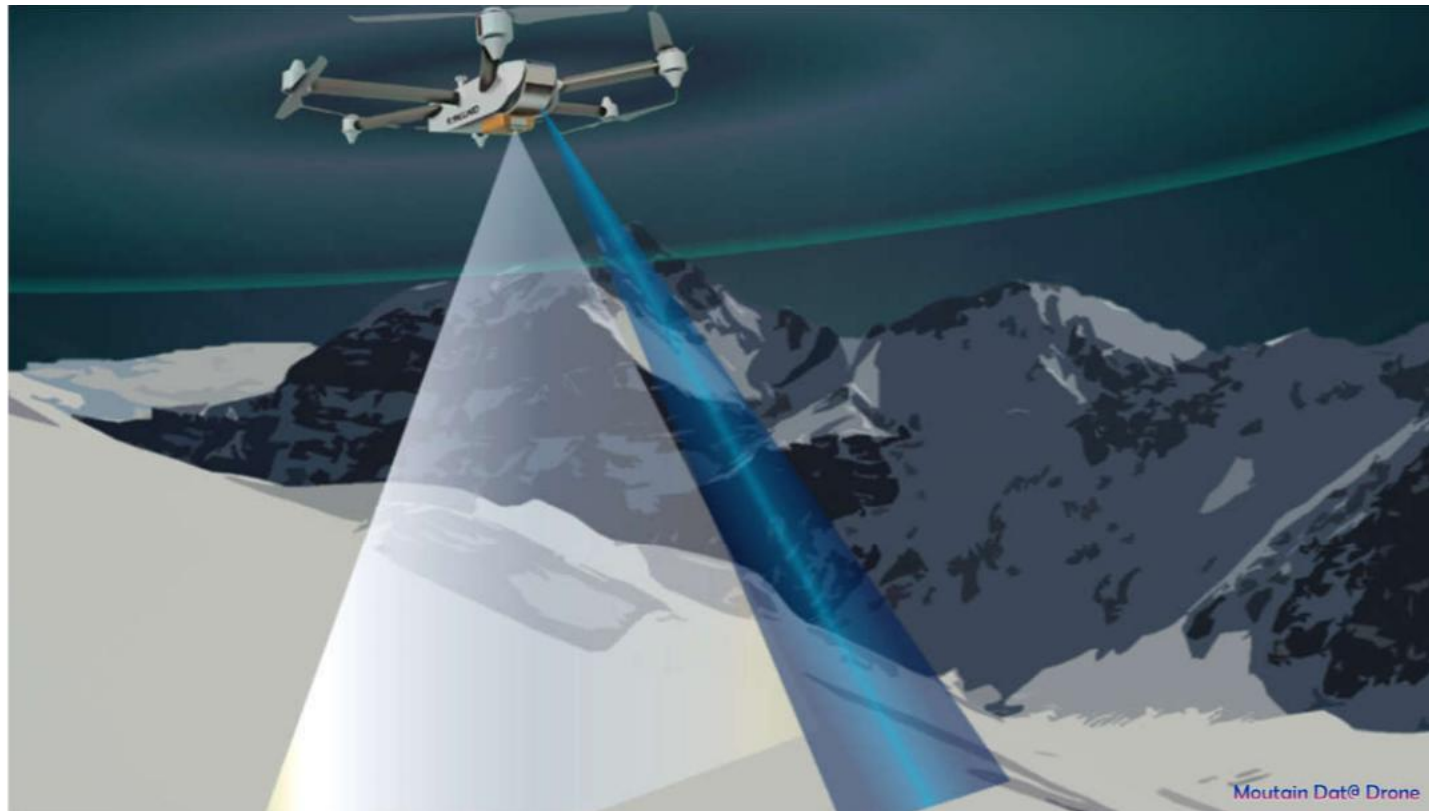
The ecological, energy and climate crises we are experiencing are profoundly changing and threatening our societies : Management of bioresources, Security of public property and persons, Protection and conservation of ecosystems...

SOLUTION

MDD offers a set of industrial automated multi-sensor, multi-tool and multi-mission industrial drones paired with new generations of connected object for the protection of people and the environment. A full range of services to meet the specific needs of our territories.

OUR LAB CONTRIBUTION

Saireniti platform integrator and lead developer (digital platform for the exploitation of data from aircraft and sensors). Construction of the data warehouse, guaranteeing its security and regulatory compliance (GDPR in particular).



Fictional picture of the drone during research activity

Country : France

Sector : Sport, mountain, tourism, Agriculture, agri-food, forestry, digital

Actors : Private

Complexity of the project : ★★★★★

Time of development : X (ongoing)

Partners : API-K, Sintégra, Séraphin UAV, Region Auvergne-Rhône-Alpes

Use case - BEAMitup

NEED

Improving the global food supply chain: laboratory tests take 7days (to check food quality), daily food recall costing millions \$

SOLUTION

The EU-funded BEAMitup project proposes a platform that provides rapid DNA screening, developed and patented by SwissDe Code, certifying the presence of pathogens or identifying pork in beef meat in just 30 minutes.

OUR LAB CONTRIBUTION

We made available to them a server in which the rice's DNA sequencing data was sent, which we analyzed using a data science algorithm to verify its quality and provenance in order to certify the Basmati designation and the absence of contaminants.



Picture of machine that analyses food

Country : Switzerland

Sector : Operation of general health establishments

Actors : SwissDeCode, actors of global food supply chain (e.g : traders)

Complexity of the project : ★★☆☆☆

Time of development : 7 months

Partners : European Commission (2,5M€ of investment)

Use case - Fraude IA

NEED

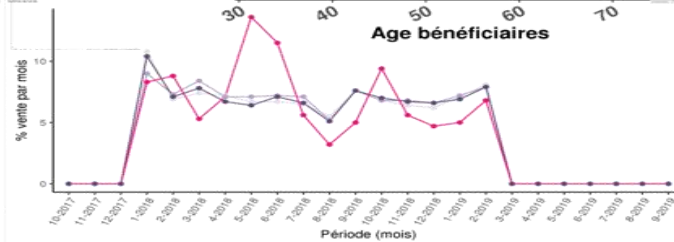
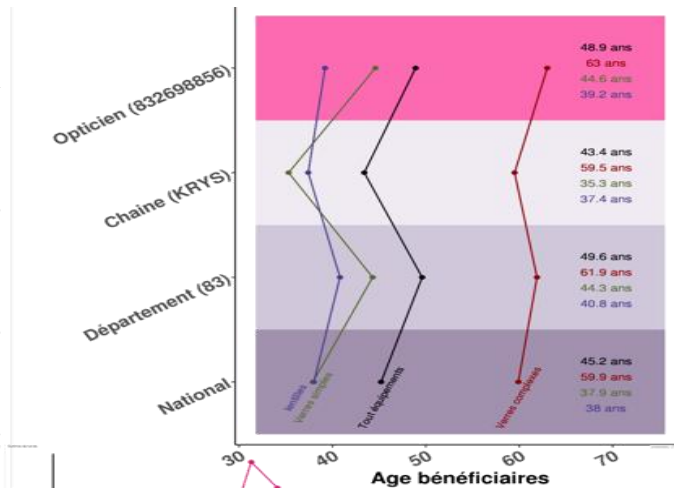
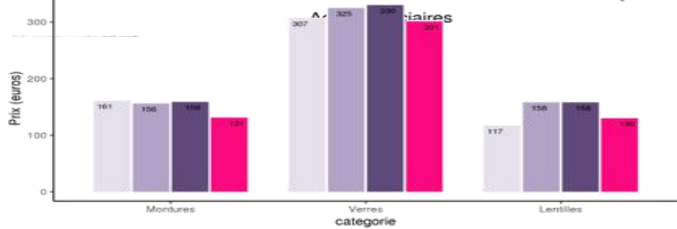
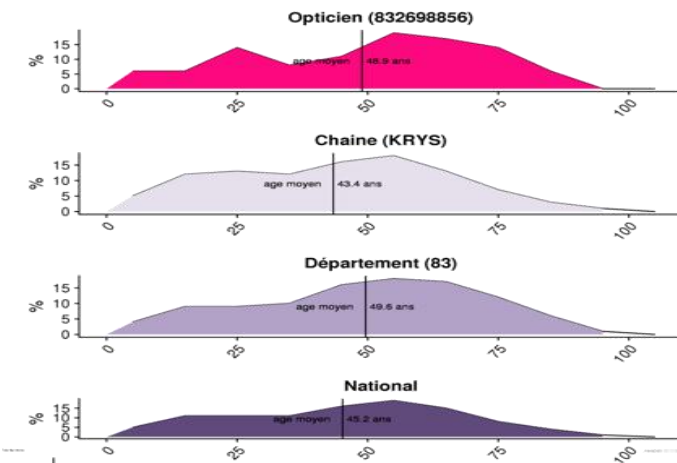
In the optics : 5 million requests for takeovers per year, more than 13,000 opticians with a contract, a sector particularly "affected" by fraud -> Successfully decoupling error from abuse and fraud - Block "known" fraud in real time - Discover new schemes of fraud

SOLUTION

Implementation of a mass behavioural change detection solution for fraud identification through traditional statistical techniques, artificial intelligence techniques (neural networks), real-time dataviz tools (big data).

OUR LAB CONTRIBUTION

Data science applied to real-time dashboards and implementation of an AI module observing the behavior of opticians according to 124 axes and proposing new rules of controls analysed and updated by the fraud unit.



Country : France

Sector : Optics (adaptable to all sectors)

Actors : X

Complexity of the project : ★★★★★

Time of development : X months

Partners : Generali, be ys

Dashboards provided by the product

Use case - Reach Project

NEED

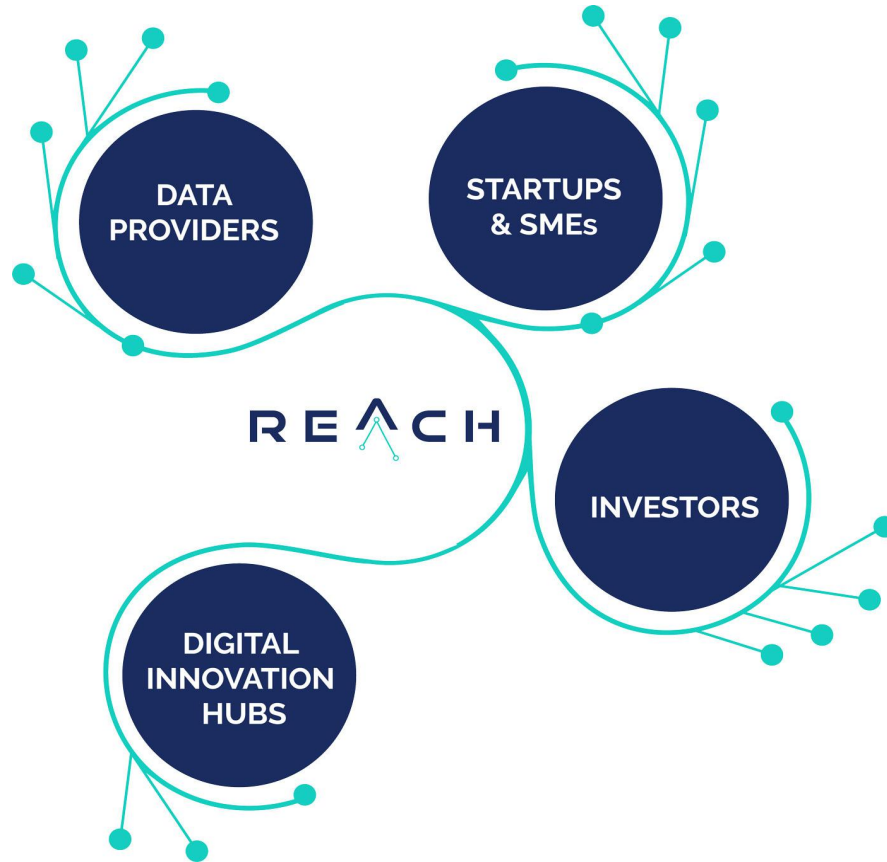
The EU needs to go further in developing a competitive, secure, inclusive and ethical digital economy with world-class connectivity. Special emphasis should be placed on access to, sharing and use of data, data security and on Artificial Intelligence, in an environment of trust.

SOLUTION

REACH, is an Innovation Action project funded by the European Commission launched in September 2020. Big Data incubator, building on the successful efforts of EDI – European Data Incubator to accelerate data-driven innovation in Europe, towards the vision of the Common European Data Space.

OUR LAB CONTRIBUTION

In this project we have the role of solution provider. The objective is to make available our products from the researchLab: ProRegister and Anonymizer to the digital companies selected in the project in order to offer them a secure and functional technological environment



Continent : Europe

Sector : Cross-sector

Actors : Incubatees societies

Complexity of the project : ★★☆☆☆

Time of development : X months

Partners : European Commission, Data Providers, Tool Providers

bewys
research



**Thank you
for your
attention**

Contact details :

contact@be-ys-research.com